

Williams Gateway Self Storage

FDIC ASSET EXCLUSIVELY LISTED

Location:

W/SWC of Pecos Rd & Ellsworth Rd,
Mesa, AZ

Description:

9.07 Acres
APN 304-62-785, 786, 787 ,& 788

Status:

All offsites have been completed including sidewalk, road cuts and turn-ins. Construction on two of the buildings was started. One building has the exterior footings completed while the other has exterior vertical walls completed.

Carrying Costs:

2011 Taxes - \$20,970.90

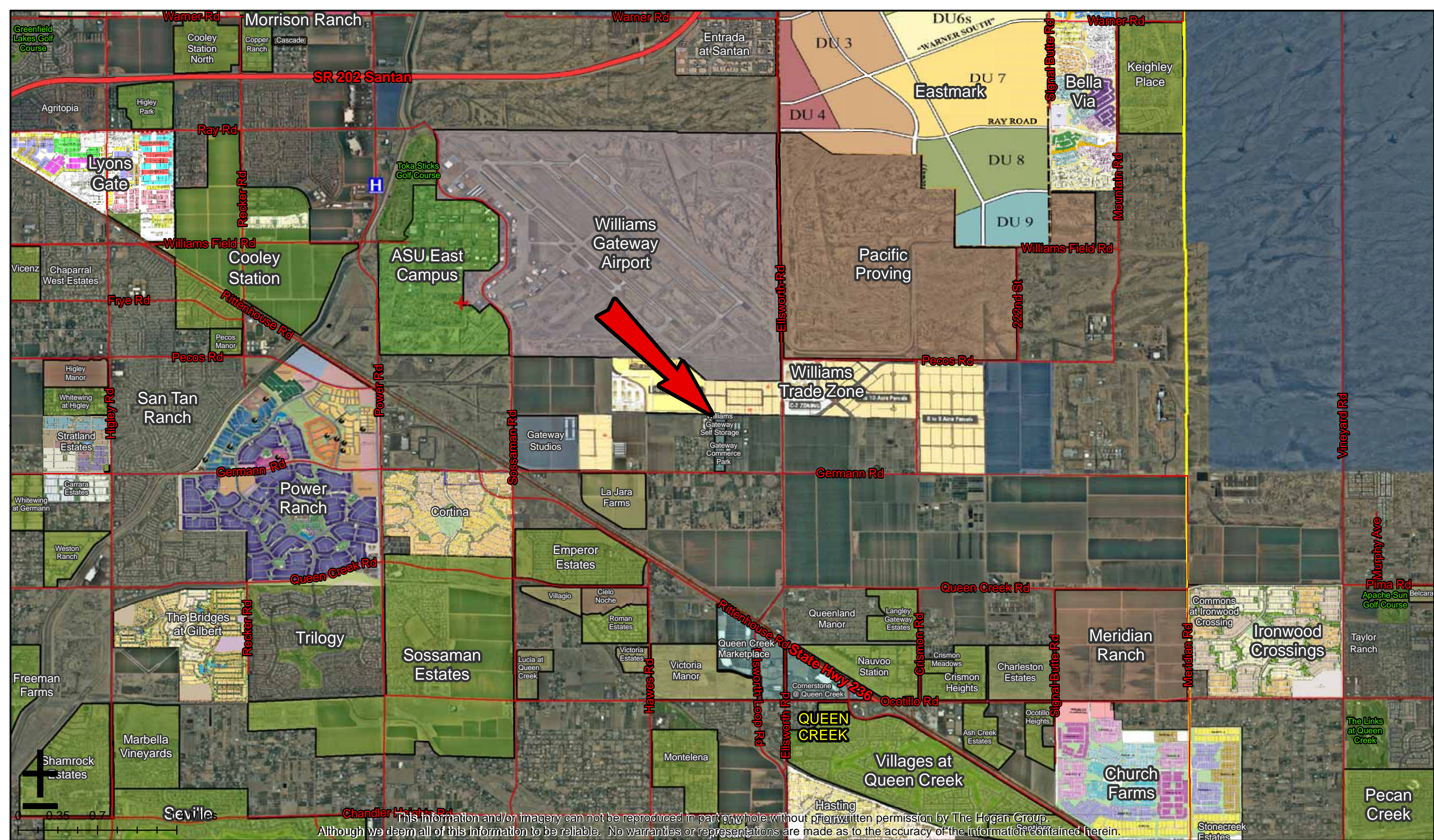
Purchase Price:

\$550,000



DISCLAIMER

The information contained herein has either been given to us by the owner of the property or obtained from sources that we deem reliable. No warranties or representations, expressed or implied, are made as to the accuracy of the information contained herein, and same is submitted subject to errors, omissions, change or price, rental or other conditions, withdrawal without notice, and to any special listing conditions, imposed by our principals.



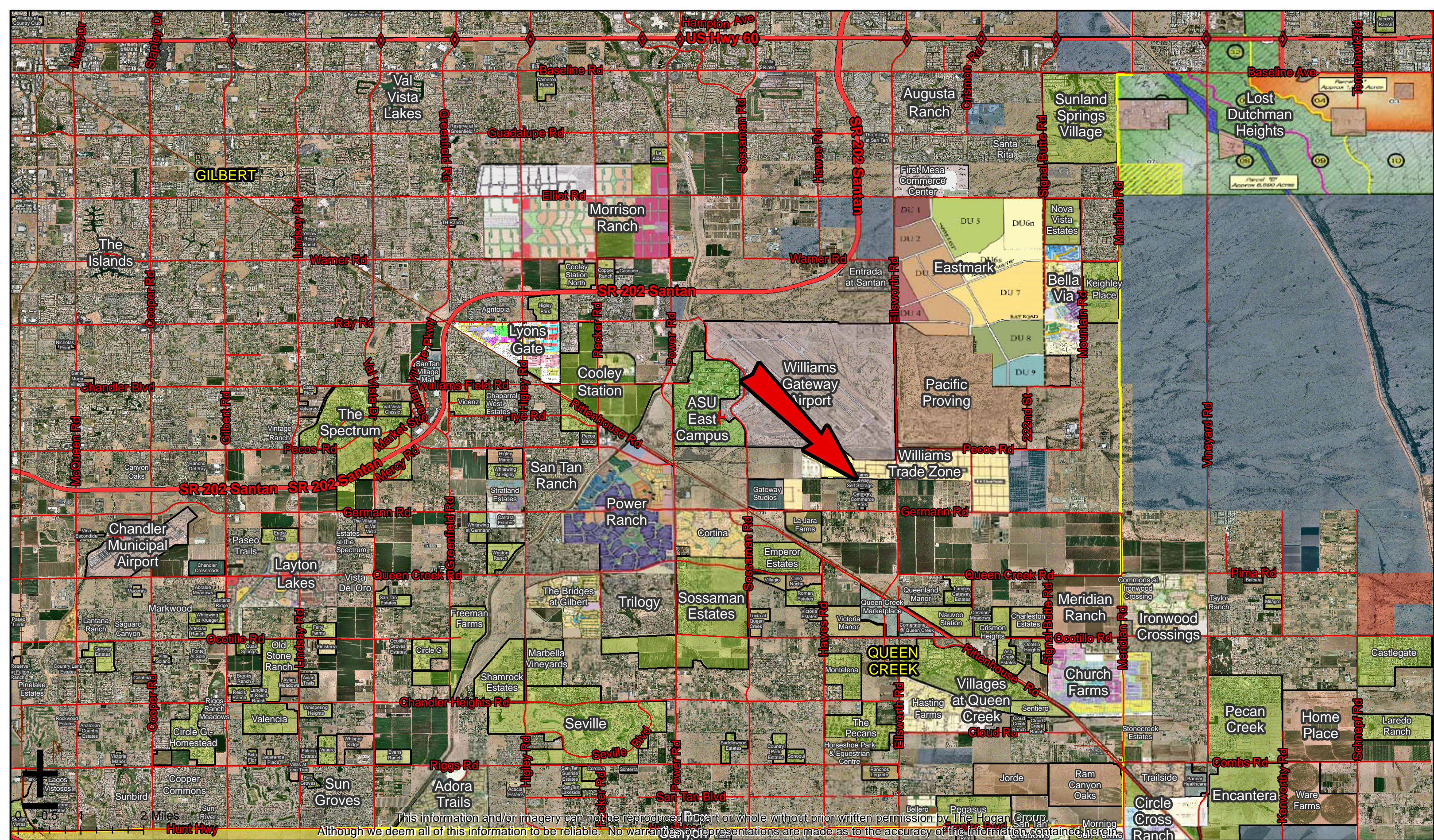
This information and/or imagery can not be reproduced in part or whole without prior written permission by The Hogan Group. Although we deem all of this information to be reliable. No warranties or representations are made as to the accuracy of the information contained herein.



Williams Gateway Self Storage

9.07 Acres - W/SWC of Pecos Rd & Ellsworth Rd, Mesa, AZ

The Hogan Group
 7114 E Stetson Dr, Ste 400
 (602) 553-4117 | Main
 (480) 634-4479 | Fax



This information and/or imagery can not be reproduced in part or whole without prior written permission by The Hogan Group. Although we deem all of this information to be reliable. No warranties or representations are made as to the accuracy of the information contained herein.

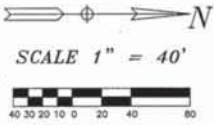


Williams Gateway Self Storage

9.07 Acres - W/SWC of Pecos Rd & Ellsworth Rd, Mesa, AZ

The Hogan Group
 7114 E Stetson Dr, Ste 400
 (602) 553-4117 | Main
 (480) 634-4479 | Fax

WILLIAMS GATEWAY SELF STORAGE FINAL PLAT

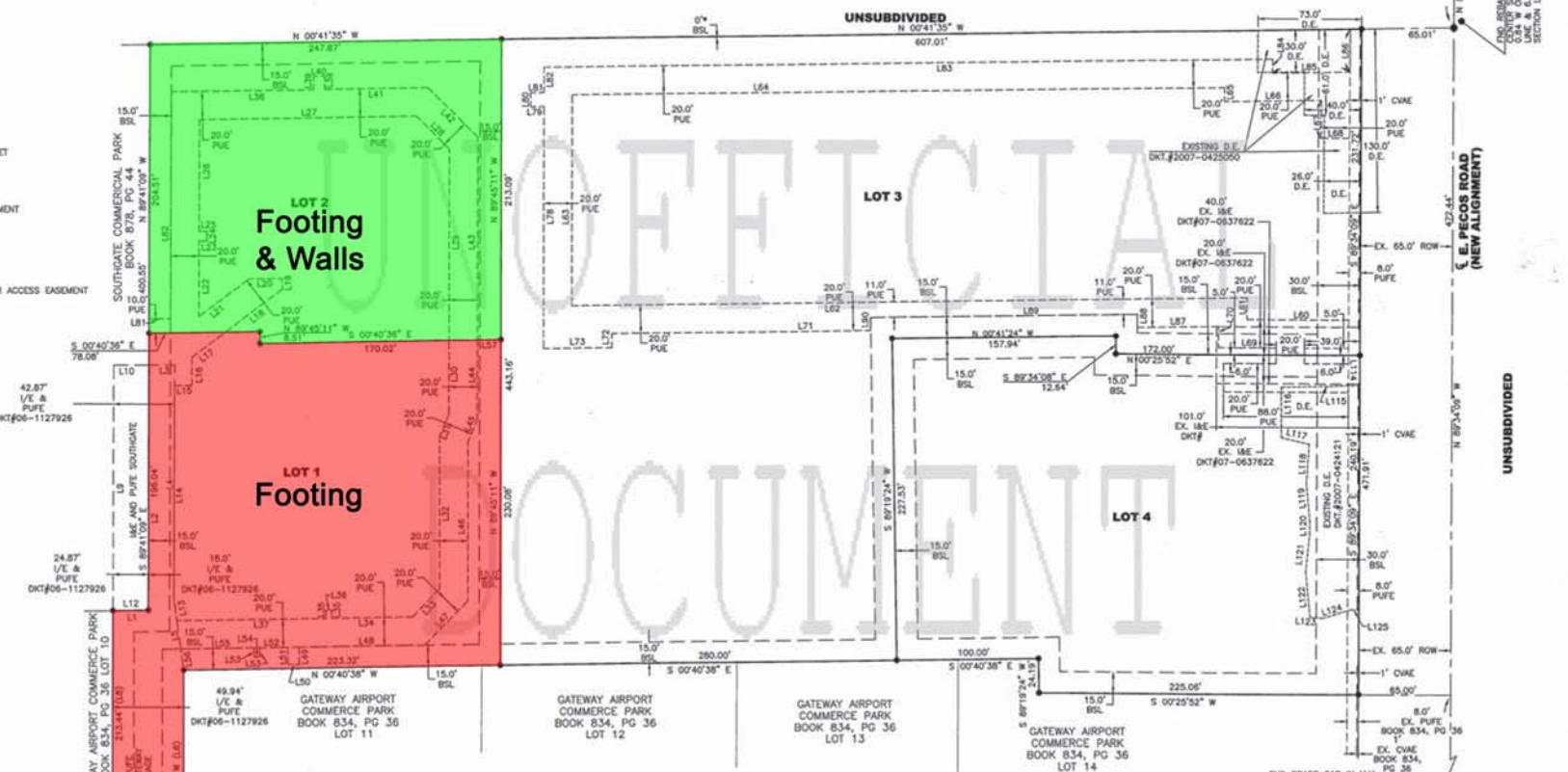


LEGEND

- PROPERTY CORNERS SET 1/2" REBAR #16097 UNLESS ANNOTATED
- PUFE PUBLIC UTILITIES FACILITIES EASEMENT
- PUE PUBLIC UTILITIES EASEMENT
- LINE BUILDING SETBACK
- IAE INGRESS & EGRESS EASEMENT
- L.S. LANDSCAPE SETBACK
- POB POINT OF BEGINNING
- CVE CONTROLLED VEHICULAR ACCESS EASEMENT
- D.E. DRAINAGE EASEMENT

IAE & PUE LINE TABLE		
NUMBER	DIRECTION	DISTANCE
L1	N 00°40'38" W	24.87'
L2	N 89°41'09" W	173.61'
L3	N 00°40'38" W	18.00'
L4	S 89°41'09" E	213.44'
L5	N 00°40'38" W	0.86'
L6	N 89°42'40" W	170.60'
L7	S 00°40'36" E	89.29'
L8	S 89°41'09" E	213.44'
L9	N 89°41'09" W	173.90'
L10	N 00°00'12" E	24.87'
L12	N 00°40'38" W	24.87'
L13	S 82°18'58" W	15.41'
L14	N 89°41'09" W	151.21'

IAE & PUE LINE TABLE (CONT'D)		
L15	N 00°40'36" W	12.08'
L16	S 89°41'09" E	19.40'
L17	S 36°55'05" E	29.78'
L18	N 36°55'05" W	50.15'
L19	N 89°19'24" E	7.84'
L20	S 00°40'36" E	23.13'
L21	S 36°55'05" E	44.53'
L22	S 89°41'09" E	53.98'
L23	N 00°17'20" E	5.56'
L24	S 89°42'40" E	7.00'
L25	S 00°17'20" W	5.56'
L26	S 89°41'09" E	78.37'
L27	N 00°40'38" W	153.07'
L28	N 45°14'49" E	32.86'
L29	S 89°45'11" E	135.41'
L30	S 89°45'11" E	52.09'
L31	S 67°15'11" E	16.20'
L32	S 89°45'11" E	108.55'
L33	S 45°39'06" E	27.02'
L34	S 00°39'06" E	56.91'
L35	S 88°59'55" W	5.75'
L36	S 00°39'06" E	4.00'
L37	S 00°39'06" E	105.47'
L38	N 00°40'38" W	100.46'
L39	S 89°19'22" W	9.42'
L40	S 00°40'38" E	8.00'
L41	N 00°40'38" W	72.75'
L42	N 45°14'49" E	49.62'
L43	S 89°45'11" E	143.37'
L44	S 89°45'11" E	56.39'
L45	S 67°15'11" E	16.70'
L46	S 89°45'11" E	112.68'
L47	S 45°39'06" E	43.41'
L48	S 00°39'06" E	88.67'
L49	N 89°20'54" E	12.21'
L50	S 00°39'06" E	8.00'
L51	S 89°20'54" W	12.21'
L52	S 00°39'06" E	19.84'
L53	N 89°12'45" E	6.52'
L54	S 00°39'06" E	4.00'
L55	S 00°39'06" E	51.69'
L56	N 82°18'58" W	15.19'
L57	S 00°40'36" E	16.61'
L60	S 00°25'52" W	71.64'
L61	N 89°10'32" E	15.52'
L62	S 00°42'39" E	476.71'
L63	N 89°45'11" W	149.31'
L64	N 00°40'38" W	460.42'
L65	N 89°33'29" E	10.00'
L66	N 00°40'38" W	68.15'
L67	S 89°34'08" E	26.82'
L68	N 00°10'38" E	20.00'
L69	S 00°25'52" W	40.78'
L70	N 89°10'32" W	15.11'
L71	S 00°42'39" E	182.68'
L72	S 89°45'11" E	10.00'
L73	S 00°42'39" E	48.19'
L78	N 89°45'11" W	171.18'
L79	S 00°40'38" E	9.54'
L80	N 89°54'44" W	10.00'
L81	N 00°40'36" W	15.00'
L82	N 89°41'09" W	160.52'
L83	N 00°40'38" W	514.19'
L84	N 89°33'29" E	10.00'
L85	N 00°40'38" W	54.46'
L86	N 89°34'09" W	30.62'
L87	S 00°42'39" E	57.34'
L88	N 89°10'32" W	9.00'
L89	S 00°42'39" E	188.30'
L90	S 89°10'32" E	9.00'



IAE CURVE TABLE				
NUMBER	DELTA ANGLE	TANGENT	RADIUS	ARC LENGTH
C1	52°01'16"	12.20	25.00	22.70
C2	52°09'53"	12.24	25.00	22.76

LOT 4 DRAINAGE EASEMENT LINE TABLE				
L114	S 89°34'08" E	21.05'		
L115	S 01°00'24" E	55.27'		
L116	S 89°44'40" E	35.79'		
L117	N 13°28'53" E	20.22'		
L118	S 85°47'53" E	28.13'		
L119	N 85°13'44" E	27.22'		
L120	S 89°42'00" E	8.83'		
L121	S 83°50'11" E	27.12'		
L122	N 84°50'52" E	31.99'		
L123	N 03°53'35" E	8.84'		
L124	N 16°03'12" W	21.06'		
L125	N 00°25'52" E	5.41'		

BOOK 934 PAGE 12
OFFICIAL RECORDS OF
MARICOPA COUNTY RECORDER
HELEN PURCELL
2007-0761415



ALLEN CONSULTING ENGINEERS, INC.

2650 N. THUNDERBIRD CIRCLE #132
MESA, ARIZONA 85215
PHONE (480) 844-1066
FAX (480) 830-8453
E-MAIL: aee@allenconsulting.com

WILLIAMS GATEWAY SELF STORAGE

FINAL PLAT DR06-37

JOB NUMBER	03922	SHEET	2 OF 2
DRAWING	FINAL PLAT SH2	CHECKED BY	
DRAFTSMAN		DATE	06-19-07